



ETERNITI MOTORS
LONDON

ETERNITI MOTORS

Luxury, exclusivity, control

At Eterniti Motors we create products combining traditional craftsmanship with the latest in automotive technologies to offer the ultimate in contemporary luxury.

Our cars are designed to satisfy a growing demand for additional exclusivity, personalisation and, where required, totally bespoke specifications. To satisfy unmet needs and put the customer in control.

Uniquely based in London where the vehicles are hand-built, but with a presence in key Asian markets, we produce cars demonstrating our engineering excellence, motor sport pedigree and understanding of the needs of international luxury car customers - but with British soul and style running right through them.

Eterniti. A new kind of luxury.



ARTEMIS

THE WORLD'S FIRST SUPER-SUV

The Artemis embodies our ethos of giving customers what they want but cannot find elsewhere. With greater luxury, exclusivity and performance than any existing SUV, it creates a new class of car.

But it goes further than that. Artemis is the first SUV with a limousine-like rear passenger compartment, featuring twin, multi-functional pilot seats and new levels of legroom. So you can be chauffeured in first-class luxury, get

important work done, or just sit back and relax. And yet, with the effortless power and dynamic responses of a performance car, you can also take the wheel for the sheer pleasure of it.

A limousine and all-wheel-drive supercar you can use every day, in any environment.

Artemis. The ultimate crossover.









ATTITUDE

A C O N F I D E N T L O O K

Artemis makes an immediate impact. Over two metres wide, it has a purposeful stance enhanced by carbon aerodynamics features and huge 23" wheels with ultra-low profile tyres.

But the muscular body has form to match function. Made entirely from carbon composite, normally found in race cars for its light weight and strength, it is also beautifully detailed.

Chrome is not confined to areas like the traditional mesh grille and surround but also features on bold, back-lit details on the front wings and large, sculpted exhaust embellishers.

Closer inspection reveals more attention to detail in the Eterniti-etched headlamp bezels and carbon-finished wing mirrors, while the rear is given unique visual impact by the chevron detail in the full-width, high-mount brake light set into the roof spoiler.





HANDMADE

TRADITIONAL MEETS TECHNOLOGY

To create the Artemis cabin experience requires craftsmen and passion. Artisanship and traditional skills, engineering ingenuity and advanced technologies, blended seamlessly.

The cabin is handcrafted. Exquisitely detailed, patterned and stitched leather sits alongside beautifully finished woods and other veneers, trimmed by specialists with decades of experience working for the most demanding luxury brands.

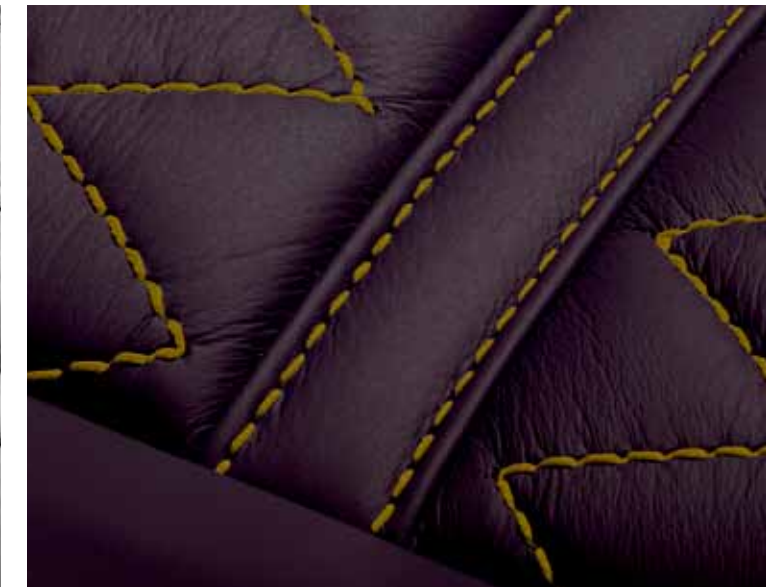
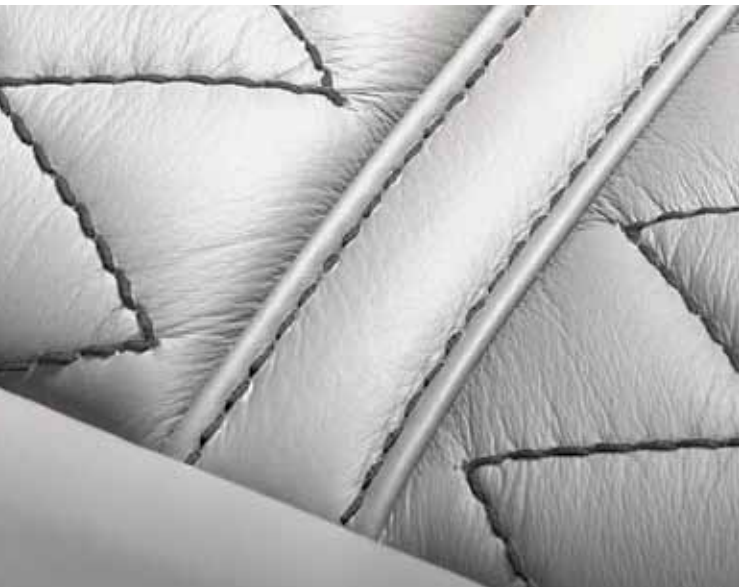
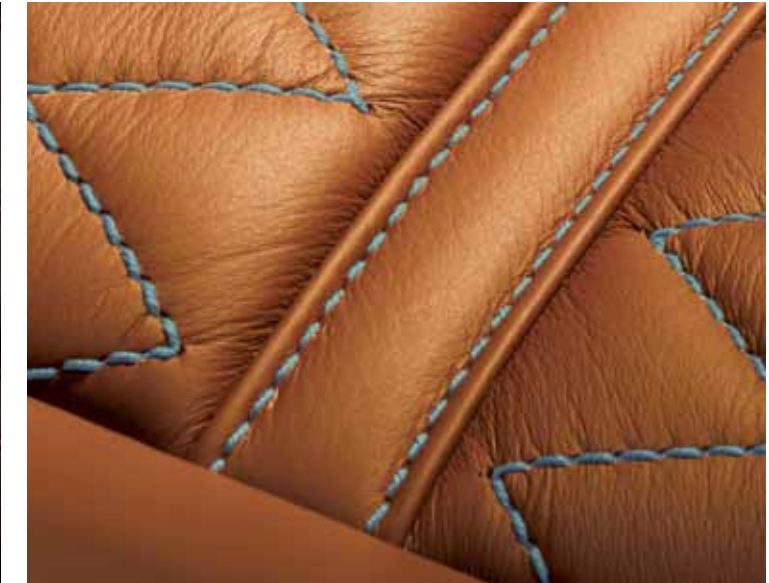
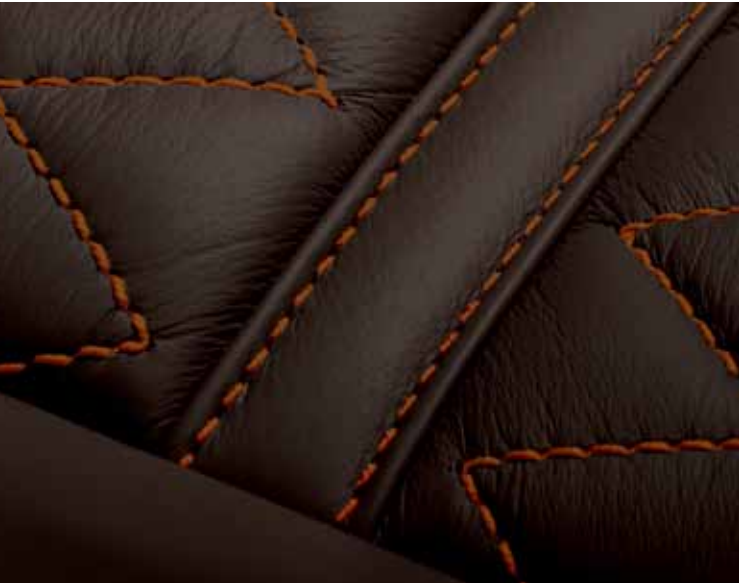
The premium-grade leather hide is hand-selected from the finest tanneries around the world, much of it sourced

from Italy and Britain. It is still worked manually in the traditional way, but is then scanned using state-of-the-art computer technology to ensure perfect quality.

The cutting-edge carbon composite bodies, super-lightweight forged alloy wheels and carbon front splitter and rear diffuser are produced with equal skill. Everything from the clay models used in the body styling process to the fine-tuning of the ride and handling has the human touch.

And every car is hand-built at Eterniti's London facilities.





EXCLUSIVE

MAKE IT PERSONAL

Artemis offers new levels of exclusivity and personalisation.

The standard specification offers 15 exterior paint finishes, ranging from the restrained to the exuberant. There are 16 leather colours, with a large choice of detailing such as stitching, patterning and embossing, and multiple colour combinations.

Together with the choice of six veneers, plus alcantara roof linings, that allows countless trim options, ensuring that each car reflects each customer.

Want chrome etched to a personal design? Embroidered leather? Monograms? Colours matched to a favourite personal possession? Gem stones? More performance? Now you can have it, and Eterniti's atelier will create your dream specification.

Whether tailored or fully bespoke, we will design your car and build it for you to deliver a product which is completely individual. Completely you.





LAVISH

TRAVEL FIRST-CLASS

Inside, Artemis offers a sybaritic experience.

The entire cabin is swathed in leather hide, which even covers the top of the dashboard and frames the fascia with a unique top roll. The immediate sense of refined luxury is complemented by lambswool rugs, which sit on quilted floor trim extending to the luggage compartment. Veneers, including a choice of burr walnut, piano black, brushed aluminium and carbon fibre, complete a sensuous environment.

For the driver, the heated steering wheel's combination

of leather and veneer trim means that driving the Artemis is always a tactile experience. And, no matter how fast you drive, a pleasurable one. An 18-way memory package ensures that you're in exactly the right position. The communication management system's HD touchscreen display gives you access to the 3D navigation and the digital surround-sound audio which puts out 585 Watts through 14 speakers.

And, when you get to your destination, parking is made simple by a park assist system with cameras.

INTERIOR



INDULGENT

A D I F F E R E N T W O R L D

For rear-seat passengers a journey is like being transported into a different world.

Occupants can recline electronically in their individual seats with heating and cooling. Create their own atmosphere thanks to climate control with air quality and humidity sensors and a carbon filter.

Be calmed by a starlight roof lining or enjoy the view through a panoramic glass roof. Slip an iPod into the dock to connect to the high-end audio system. Press a button to electronically reveal the concealed tablets for some work or web surfing. Pour a drink from the chiller into the crystal glasses.

Or just stretch out and enjoy the journey.





DYNAMIC

RACE-BRED

With over 600bhp and 750Nm torque available from its twin-turbo V8 engine through an 8-speed semi-automatic gearbox, Artemis has serious performance.

It can reach 100kph from standstill in 4.5secs and 290kph flat-out. But the handling and grip are equally impressive, thanks to an R&D team with an outstanding pedigree. Chief Engineer Alastair Macqueen was responsible for the Jaguar XJ220 – then the world's fastest road car – and masterminded three wins in the Le Mans 24-Hour race for Jaguar and Bentley.

And for test driving he was able to call on racing drivers including Johnny Herbert, who not only tasted victory at Le Mans but is also a Formula 1 Grands Prix winner.

Artemis delivers its power through a state-of-the-art active all-wheel drive system and an intelligent eight-speed gearbox. If the driver wants, the car will do all the work. Alternatively, gears can be shifted manually using the gear lever or the controls on the steering wheel.





AGILE

R E S P O N D I N G T O Y O U

The car's standard air suspension comes with a number of advanced systems to offer cutting-edge dynamics which can either thrill or provide a serene ride. As well as self-levelling and different ride-height settings, an active management system continually adjusts damping forces to suit driving style and road conditions, with options for Normal, Comfort and Sport settings.

In addition there is an active anti-roll system which responds to steering angles and lateral acceleration.

The anti-roll bars feature hydraulic swivel motors to counter lateral forces and keep the car level on any road surface, producing astonishing agility, and a dedicated setting maximises traction off-road.

Even the wheels have been developed to increase performance, with an ultra-lightweight forged alloy construction which, with the 315/25 tyres, significantly heightens steering responses.

CONTROL





SECURE

LOOKING OUT FOR YOU

With such performance, safety is paramount, and multiple active and passive safety features ensure the maximum accident avoidance and occupant protection.

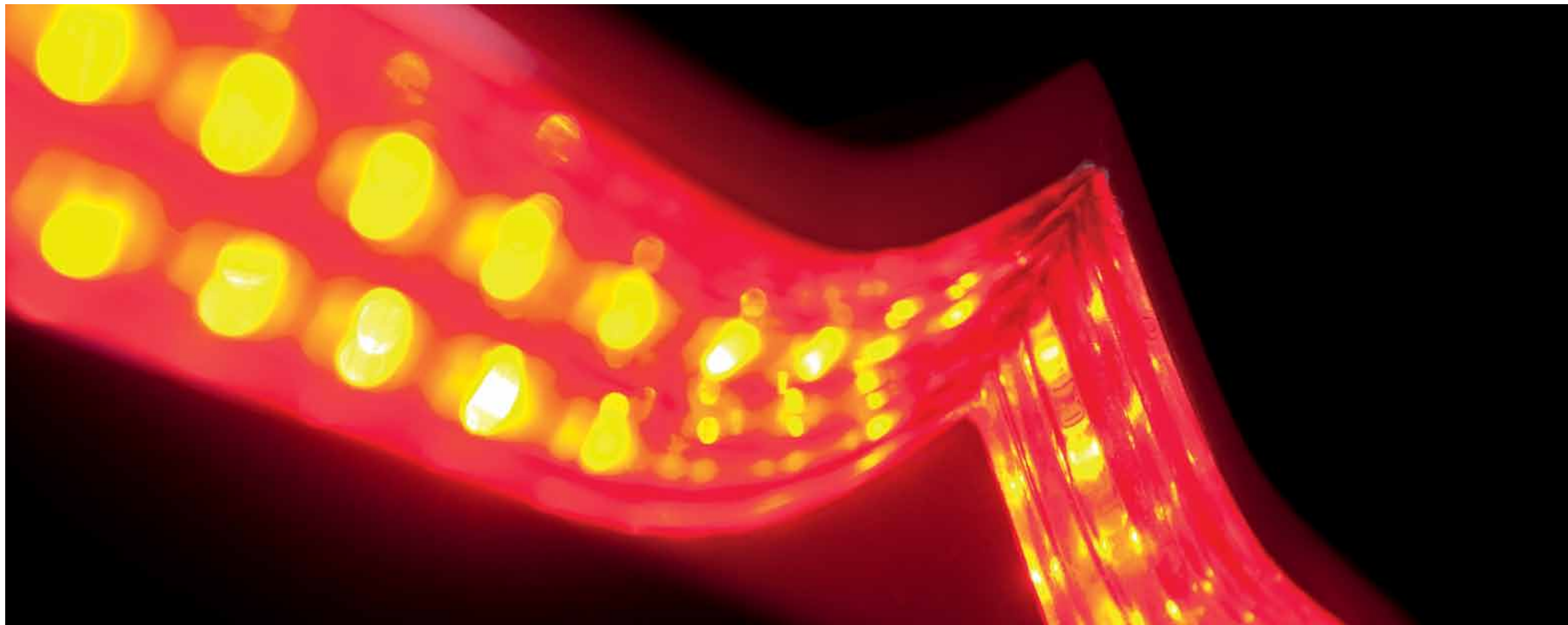
Naturally, impact absorption and intrusion prevention are built into the structure of the car. Front, side and curtain airbags, allied to front impact sensors and rollover detection, provide the best possible safety in the event of an accident.

But it is far better to prevent accidents. By offering better dynamics, the active suspension in the Artemis keeps the car stable but has also been cleverly integrated with the ABS brakes to provide an active safety system.

The stability management programme monitors all movement parameters of the car to predict and avoid problems. It can selectively apply braking to different wheels and intervene in the engine management system to modify the drive to each wheel and restore stability. In addition it readies the braking system for a quicker response and alters the ABS programme on loose surfaces.

Visibility is maximised by darkness-activated headlamps featuring a dynamic system which swivels the lights into corners based on steering angle and vehicle speed, and offers range control, speed-sensitive control and an adverse weather function.





TRIM

UNIQUE

TAILORED IN LONDON

Eterniti's designers and engineers create a car to your specification.

First we spend time consulting with you to design the vehicle. We will recommend combinations of colours and materials but we won't restrict you. We want you to be in control and to have total freedom. To allow you to put your personality into the product.

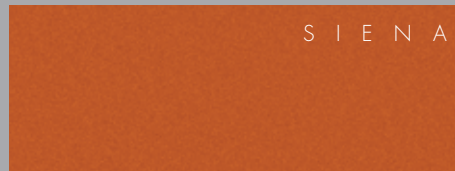
Choose from the extensive range of leathers, veneers and paints, which have been chosen to suit everyone from the coolly understated to the flamboyantly expressive.

Think of Eterniti as your tailor, your car as your suit. Made for you – the ultimate luxury and the ultimate personal statement.

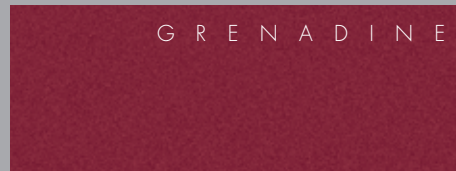


PAINT SELECTION

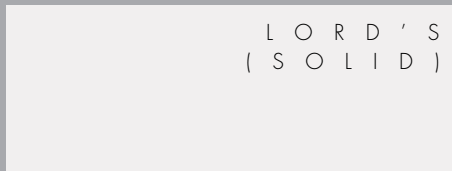
Colours are metallic unless otherwise stated



SIENA



GRENADINE



LORD'S
(SOLID)



CELTIC



TYRIAN



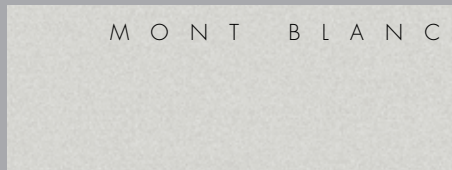
BRITANNIA



CALIFORNIA
(SOLID)



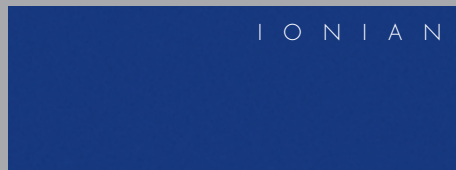
VENETIAN



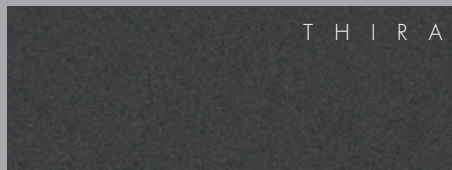
MONT BLANC



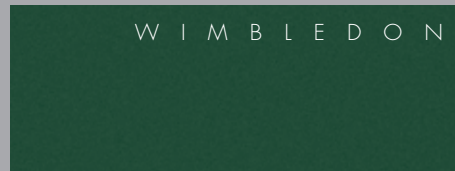
CHARTREUSE



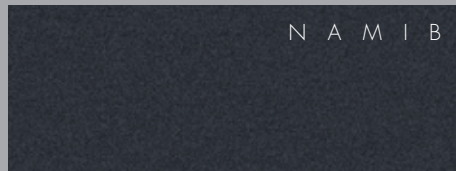
IONIAN



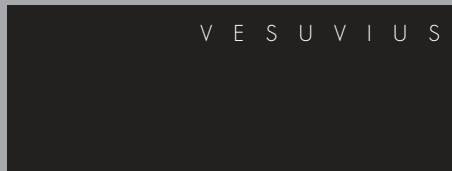
THIRA



WIMBLEDON



NAMIB



VESUVIUS

VENEER SELECTION



BURR WALNUT



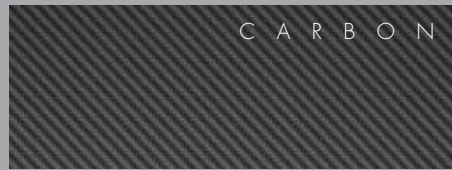
DARK WALNUT



PIANO BLACK



BRUSHED ALUMINIUM

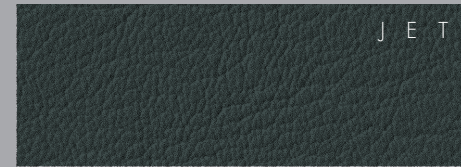
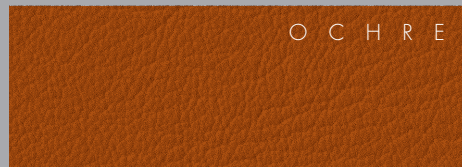
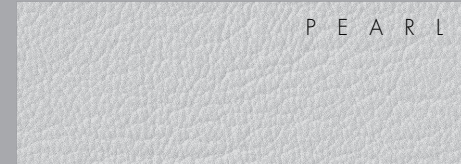


CARBON



SILVER CARBON

LEATHER HIDE SELECTION



STANDARD EQUIPMENT

Exterior

Handmade carbon composite body

Chrome mesh grille

Back-lit chrome side embellishers

Flush chrome exhaust embellishers

Carbon splitter, diffuser

23" forged alloy wheels in multiple styles

Metallic paint in 15 colours
Carbon door mirrors

Bi-Xenon lamps with dynamic lighting system

Eterniti-etched headlamp bezels

Full-width high-mount brake light with chevron detail

Comfort & Interior

Handcrafted interior with:

- Finest-grade leather hide in 15 colours
- Natural wood, piano black, brushed aluminium or carbon fibre veneers
- Lambswool rugs
- Alcantara
- Quilted floor and luggage compartment trim

Multi-functional front sports seats with 18-way memory package (including steering wheel and exterior mirrors) and powered:

- Fore and aft
- Backrest angle
- Height
- Squab angle and length
- Back and squab side bolsters
- Lumbar support
- Heating

Multi-functional twin rear pilot seats with footrests and powered:

- Recline
- Height
- Squab angle
- 4-way lumbar support
- Heating
- Ventilation

Drinks chiller and glasses

2 iPads with twin electronically revealed device holders

iPod/iPhone dock

Eterniti high-end audio system with 5.1 digital surround sound, 14 speakers, 585-Watt amplifier and noise cancellation

Communication management and navigation system with 7-inch HD touchscreen display

Panoramic roof or sunroof with starlight lining

Heated steering wheel trimmed in leather and veneers

Air conditioning-cooled glove compartment

Stainless steel tread plates

Convenience

Camera pack with parking assistance

Automatically dimming interior and exterior mirrors

Cruise control

Safety

Steering wheel and dash-mounted airbags

Side airbags (front)

Curtain airbags (front/rear)

Frontal impact sensors

Rollover detection system

Seat belt force limiters (front)

Water-repellent front side windows

Automatic headlamp activation

Dynamic lighting system with cornering function, speed-sensitive headlamp activation and adverse weather function

Daytime running lights

ABS brakes with loose surface function

Individual pad wear sensors

Stability management system with automatic brake preparation, selective braking and engine management intervention

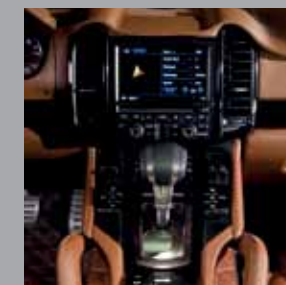
Security

Engine immobiliser

Alarm with ultrasonic interior surveillance

Automatic steering wheel lock

Encrypted key code scanning



TECHNICAL

Engine

Configuration
V8, twin-turbo

Displacement
4806cc

Fuel
Gasoline, Super Plus

Power
600bhp (441kW) @ 6000rpm

Torque
750Nm @ 2500-4600rpm

Compression ratio
10.5:1

Economy
Extra-urban 9.7
(litres/100km)
Urban 17.8
Cycle 12.6

CO2 emissions
285g/km, EU5

Performance

Max speed
289.5kph (180mph)

Acceleration
0-100kph (62mph) 4.5 secs

Transmission

Type
Active all-wheel drive with electronically variable, map-controlled multi-plate clutch, automatic brake differential and anti-slip regulation

Gearbox
8-speed semi-automatic with auto stop-start

Chassis

Suspension
Air with active management
Active anti-roll
Stability management
Front - fully independent, double-wishbone
Rear - fully independent, multi-link

Brakes
Hydraulic, ventilated discs
Front - 6-piston
Rear - 4-piston
ABS

Steering
Hydraulic, power-assisted

Wheels & Tyres

23" ultra-lightweight forged alloy wheels 23" 315/25 tyres

Tyre pressure monitoring

Body & Dimensions

Body
Carbon composite

Dimensions
4876mm (L),
2055mm (W),
1680mm (H)

Wheelbase
2895mm

Weights & Capacities

Gross weight
2880kg

Capacities
Fuel tank - 100 litres



OPTIONS

Basic Price £210,000 plus taxes

	No Cost	Cost	Bespoke
Exterior			
Special body colours		•	
Colour-matched paint finishes			•
Colour-matched brake callipers		•	
Various wheel styles	•		
Painted wheel finish		•	
Painted grille finish		•	
Matt/chrome bonnet vent bezels		•	
Monogrammed details			•
Interior			
Colour-matched leathers			•
Two-tone leather seats and door trims	•		
Perforated/patterned/brogued leather		•	
Daytona leather trim detail		•	
Leather piping		•	
Eterniti leather logo detail	•		
Personalised leather trim detail			•
Colour-matched leather			•
Walnut, aluminium, carbon, alcantara	•		
Other wood trims		•	
Starlight roof lining		•	
Monogrammed details			•
Sunroof	•		
Panoramic roof		•	
Eterniti Dynamic chassis control system	•		
Mechanical & Performance			
Additional power/torque			•
Ceramic brakes		•	



ARTEMIS

THE WORLD'S FIRST SUPER-SUV



B U Y I N G A N D O W N I N G

Eterniti is committed to providing a first-class experience from the point of enquiry throughout the lifetime of ownership. The company has sales operations in the UK and Asia, with showrooms opening in London, Hong Kong, Taipei, Tokyo and China.

Customers receive a full, two-year/100,000-mile warranty including two years' servicing. The servicing and warranty work is carried out through a 'flying doctor' service out of the UK and Asia-Pacific, or at the London and Asia facilities as they come on stream.

Sales Contact Information

sales@eternitimotors.com
Head Office +44 208 965 3500





ETERNITI MOTORS
LONDON